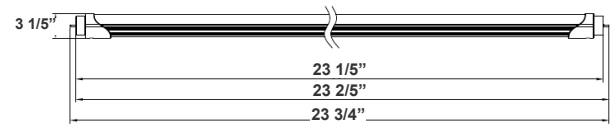
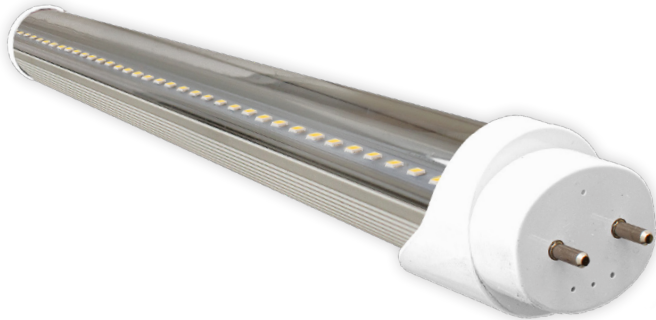


T8 SERIES COMMERCIAL INDOOR LIGHTING

T8-EZ6-AHL-2FT-15W-40K-C
T8-EZ6-AHL-2FT-15W-50K-C

Customer Name: _____
Project Name: _____
Note: _____ | Type: _____



Aluminum T8 Tube lamps switches from fluorescent tubes to LED, giving more cost efficiency by providing the same amount of lumen output with less energy consumption. Type B is designed for different projects. The LED tube offers a soft and bright light distribution.

23 3/4"(L) X 3 1/5" (D)

Features

- Type A + B (Dual UL)
- Type A: With Existing Ballast - UL No. E366061
- Type B: Ballast Override (AC Direct), Connect One End or Both Ends (Dual Function) - UL No. E342884
- 5-Year Warranty
- Clear PC Lens

Technical Specifications

Electrical:

- Voltage: 120-277V; 50/60Hz AC
- Power Factor: >0.90
- THD: <20%
- Wattage: 15W
- Efficacy: 115 LPW

Mechanical:

- Base Type: G13
- Clear PC Lens
- Aluminum Housing & PC lens
- Ambient Operating Temperature: -13°F to 113°F
- IP Rating: IP20 (Indoor)

Lighting:

- No Mercury And Virtually No UV Emission.
- Total Lumens: 1725LM
- Color Temperatures: 4000K/5000K
- Color Rendering Index: CRI ≥ 80
- Beam Angle: 120°
- Rated life: 50,000 Hrs

Applications:

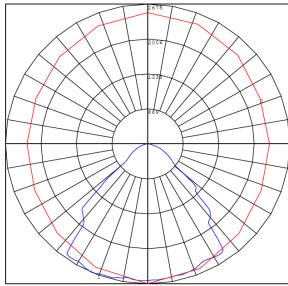
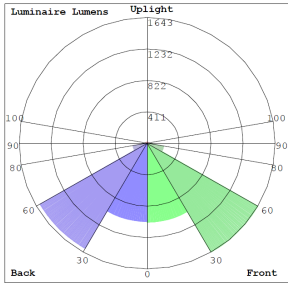
- Aluminum T8 Tube lamps switches from fluorescent tubes to LED, giving more cost efficiency by providing the same amount of lumen output with less energy consumption. Type B is designed for different projects. The LED tube offers a soft and bright light distribution.

Other Models:

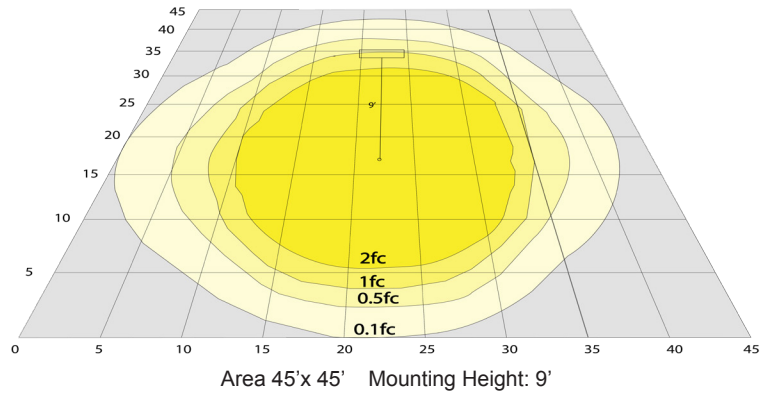
- 15W | 1650LM | T8-EZ6-AHL-2FT-15W-40K-F
- 15W | 1650LM | T8-EZ6-AHL-2FT-15W-50K-F



Photometrics: T8-EZ6-AHL-2FT-15-C



BUG Rating: B3-U2-G0



Area 45'x 45' Mounting Height: 9'

Other Views:



Close-up View



Side View



Back View

Performance Table: T8-EZ6-AHL-2FT-15-C

MODEL NO.	Wattage	Voltage	Lumens	Color Temp.	BUG Rating	LPW
T8-EZ6-AHL-2FT-15W-40K-C	15W	120-277V	1725LM	4000K	B3-U2-G0	115
T8-EZ6-AHL-2FT-15W-50K-C	15W	120-277V	1725LM	5000K	B3-U2-G0	115

Sample Ordering

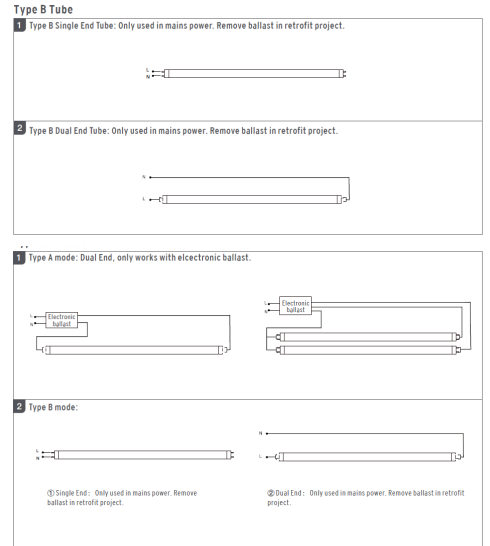
Model **Material** **Size** **Watt** **Color Temp.** **Lens Type**
 T8 - EZ6 - AHL - 2FT - 15W - - C
 40K = 4000K
 50K = 5000K

Example:

1. T8-EZ6-AHL-2FT-15W-40K-C

(FOR 15W 4000K T8 2FT TUBE LAMP 120-277V)

WIRING DIAGRAM:



Other Models: T8-EZ6-AHL-2FT-15W-F (Frosted Model)



Side View



Front View



Back View